

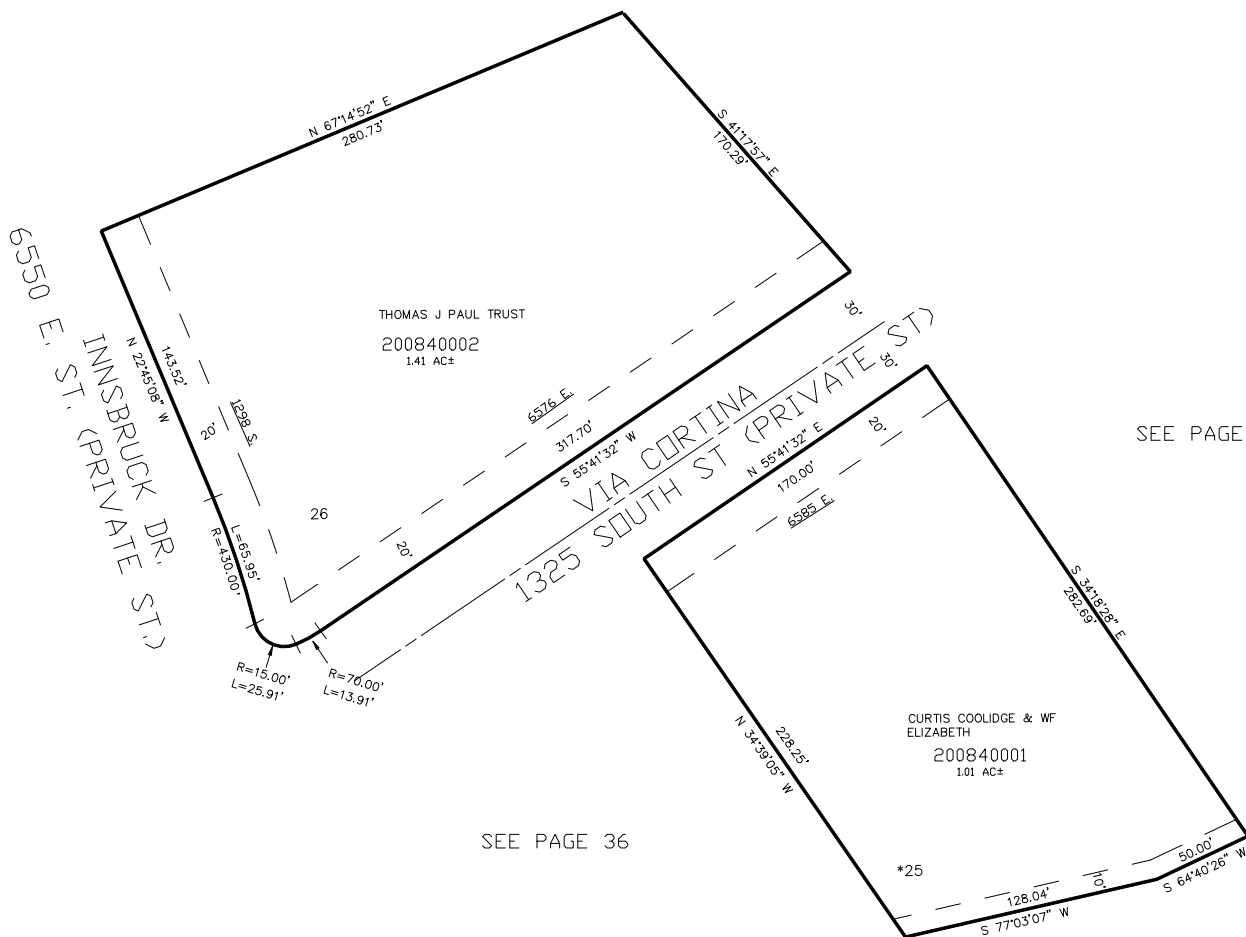
PART OF THE N 1/2, OF SECTION 24, T.6N., R.1E., S.L.B. & M.
THE SUMMIT AT SKI LAKE NO. 5

IN WEBER COUNTY

TAXING UNIT: 58

SCALE 1" = 50'

SEE PAGE 36



10' UTILITY & DRAINAGE EASEMENTS EACH
 SIDE OF PROPERTY LINES AS INDICATED
 BY DASHED LINES EXCEPT AS OTHERWISE
 SHOWN.

FOR COMPLETE ENG DATA SEE
 ORIGINAL DEDICATION PLAT IN
 BOOK 57, PAGE 100 OF RECORDS.

*SEE CORRECTION AFFIDAVIT
 E#1956630 Bk2404 Pg1923
 15-JUL-2003